



Far Horizon

Pentland House, The Bank,
St Mary's, TR21 0HY



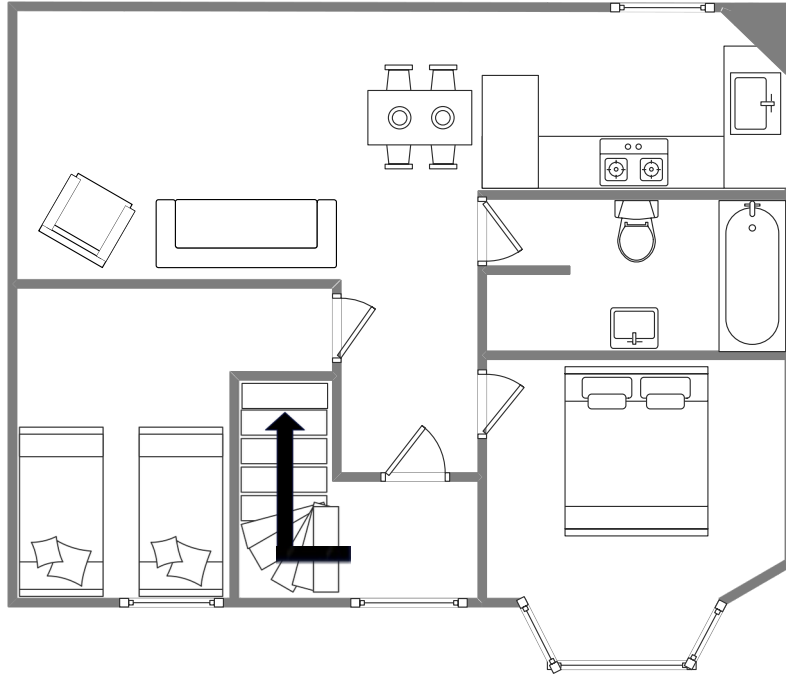
Sleeps 4 | Friday Change over

- Double and Twin Arrangement
- Internet Access
- Children Welcome
- Laundry Facility
- Convenient location for beaches and Quay
- Sea View

A comfortably furnished and well-presented first floor apartment in the heart of Hugh Town next to the historic Mermaid Inn, and offering stunning views of St Mary's busy harbour and the islands beyond. The dog friendly apartment sleeps up to four guests in one double bedroom and one twin bedroom, and includes a panoramic open-plan lounge/diner and kitchen which benefits from an abundance of natural light.

A family bathroom with shower over the bath completes the internal layout. Far Horizon has been restored using traditional Scillonian building methods which blend the past and present into a unique holiday home with exposed beams, inset fireplaces and most modern conveniences.

Layout



Getting to the property

Map of St Marys



Directions from the Quay | Walking time: 2-3 minutes

Head towards the entrance to the quay
Turn left at The Mermaid Inn on to Hugh Street
Keep to the left side of the road

Pentland House is the first building
Enter the main door to Pentland House
Far Horizon is situated on the first floor

[What3words///worth.lyricism.talker](https://www.what3words.com/worth.lyricism.talker)

Scilly Self Catering
Lower Strand
Isles of Scilly, TR21 0PS

Enquiries@scillyselfcatering.com
01720 422082
www.scillyselfcatering.com